



BLISS

144' 11" (44.17M) | HEESEN | 2007



BASIC SPECIFICATIONS

BUILDER	FUEL TYPE	GROSS TONNAGE	CRUISING/MAX SPEED	ACCOMMODATION
Heesen	Diesel	458 GT	16 knots / 25 knots	12 guests in 7 cabins
INTERIOR DESIGN	EXTERIOR DESIGN	LENGTH	BEAM	HULL MATERIAL
Palmadottir / Omega Architects	Omega Architects	144' 11" (44.17m)	29' 7" (9m)	Aluminum
CREW	FLAG	BUILT/REFIT	DRAFT (F/M)	ENGINES
9	Maltese	2007 / 2025	8' 3" (2.5m)	2 x MTU 16V 4000 M90

KEY FEATURES

- › NEW 7TH CABIN ON UPPER DECK
- › FULLY EQUIPPED NEW BEACH CLUB, RENOVATED SAUNA, COLD PLUNGE AND GYM FACILITIES
- › TECHNOHULL EXPLORER 40 FT RIB (2 X 450 HP RACING, MAX SPEED 75 KNOTS) & BRAND NEW CHASE PARDO 50 (UPON REQUEST)
- › VAST VARIETY OF WATER TOYS INCLUDING A NEW INFLATABLE PLATFORM WITH SEA POOL
- › CHEF WITH MICHELIN-STAR EXPERIENCE
- › IMPRESSIVE MAX SPEED OF 25 KNOTS
- › QUALIFIED MASSEUSE / PERSONAL TRAINER & YOGA INSTRUCTOR ONBOARD UPON REQUEST
- › COMPREHENSIVE RENOVATION IN 2024 AND 2025

WATER TOYS

- › TECHNOHULL 2022 EXPLORER 40 RIB WITH 2X450HP, (AVAILABLE EXCLUSIVELY FOR CHARTERS WITHIN GREECE.)
- › 1 X 3-SEATED SEADOO RXT-X 300 - 2022 1630CC
- › 2 STAND UP PADDLEBOARDS
- › NEW INFLATABLE PLATFORM WITH SEA POOL
- › SKIS AND A WAKEBOARD
- › FISHING EQUIPMENT
- › DIVING EQUIPMENT (UPON REQUEST)
- › RUSH SHIRTS
- › CERTIFIED JET SKI TRAINING CENTER BY RYA
- › COLD PLUNGE
- › BRAND NEW 2024 WILLIAMS TENDER 4M
- › 1 X 2-SEATED SEADOO SPARK TRIXX -2024
- › 2 X SEABOB F5S NEW
- › TOWABLE TOYS
- › SNORKELING EQUIPMENT
- › WINDSURFING (UPON REQUEST)
- › WET SUITS
- › BRAND NEW CHASE BOAT PARDO 50 (UPON REQUEST)
- › SAUNA (2-PERSON)
- › BEACH CLUB

WATER TOYS

› GYM: DUMBELLS, TRX, BALLS, ELASTIC BANDS, BOSUN, MATS ETC.

› OUTDOOR CINEMA ON THE SKY LOUNGE

› MASSAGE TABLE

› SUNDECK - DANCING UNDER THE MEDITERRANEAN STARS WITH NEW SPEAKERS AND NIGHTCLUB LIGHTS

BLISS



BLISS



BLISS



BLISS



BLISS



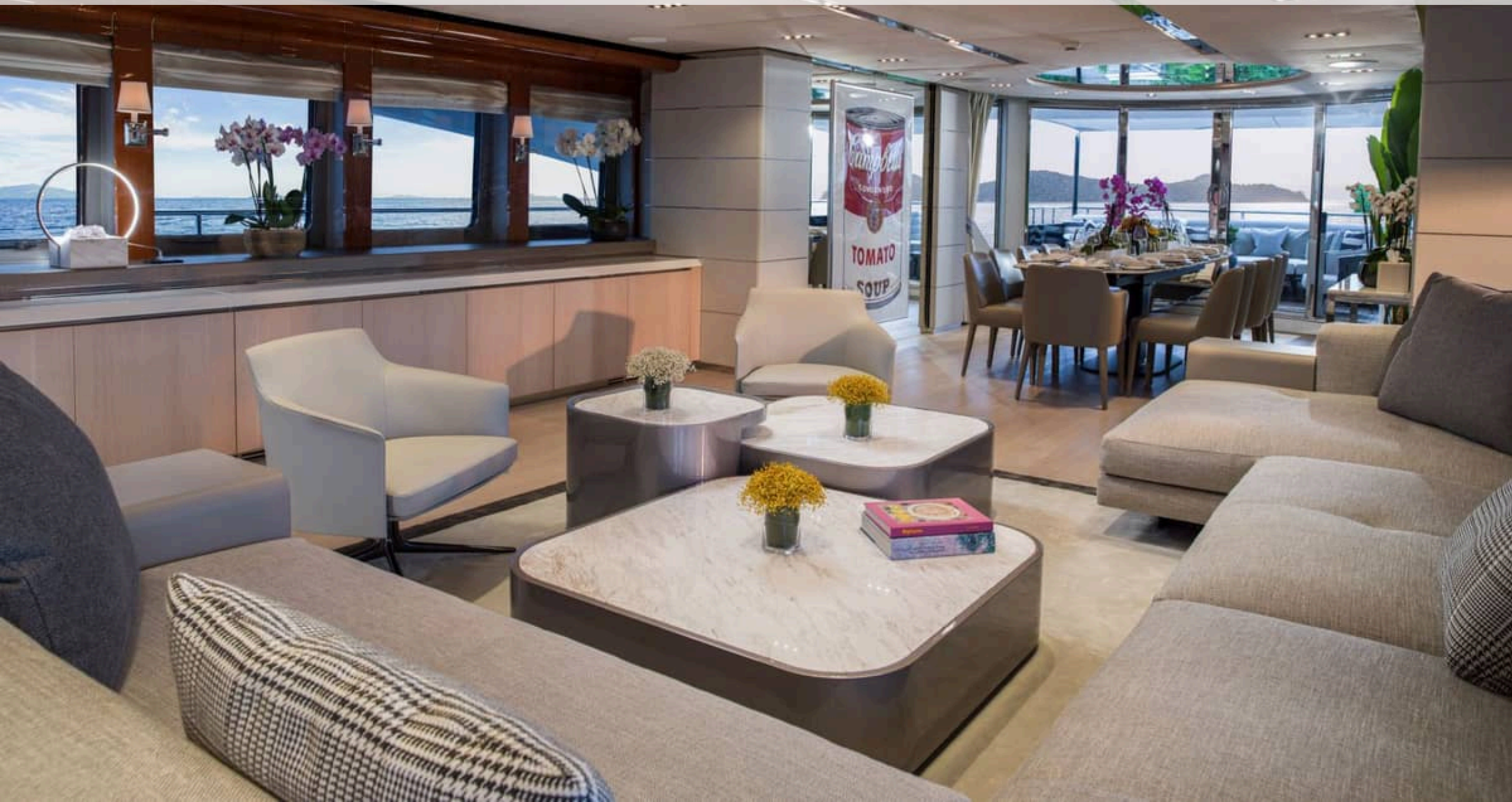


BLISS













BLISS



BLISS



BLISS



BLISS



BLISS



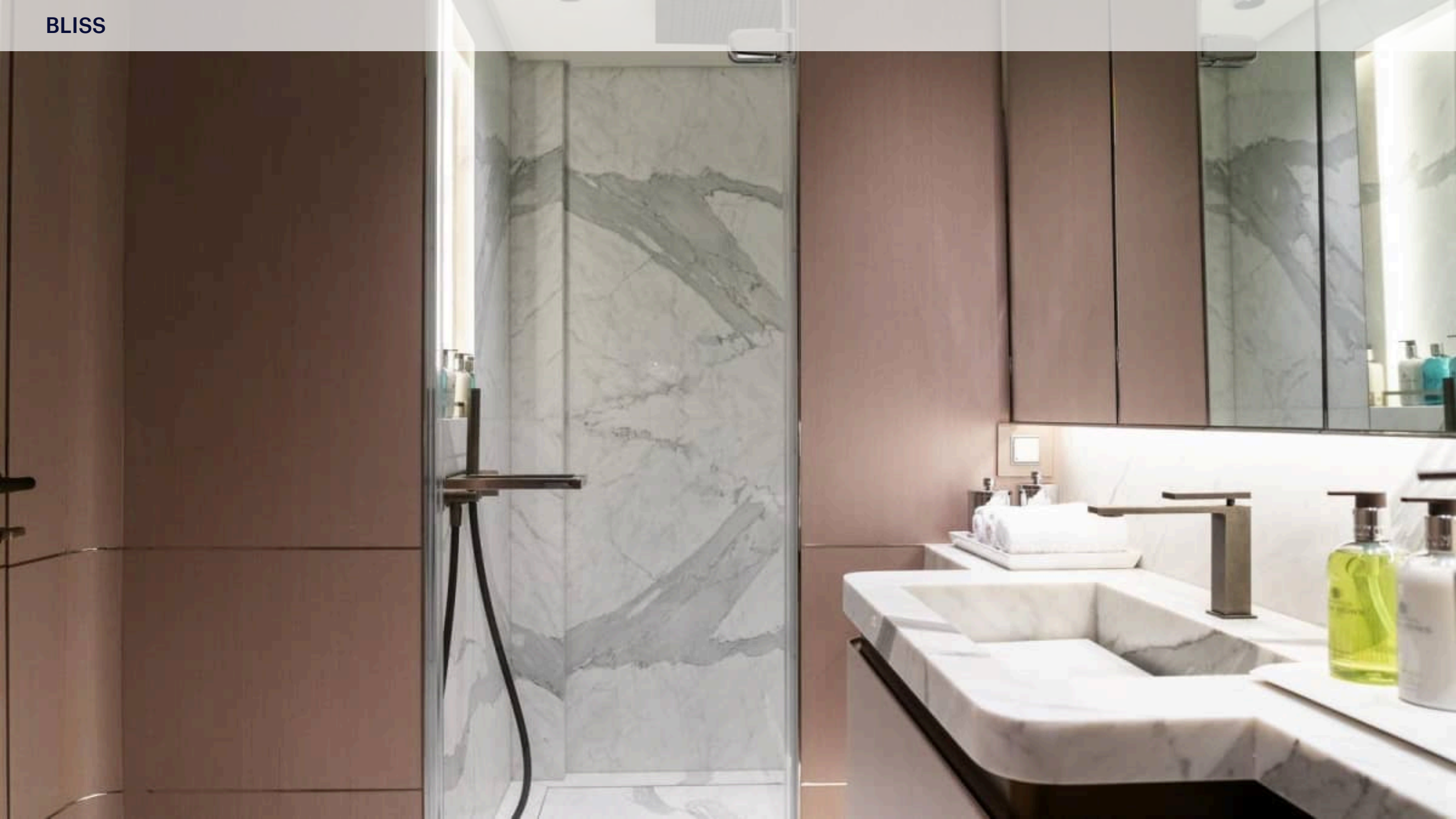
BLISS



BLISS



BLISS



BLISS



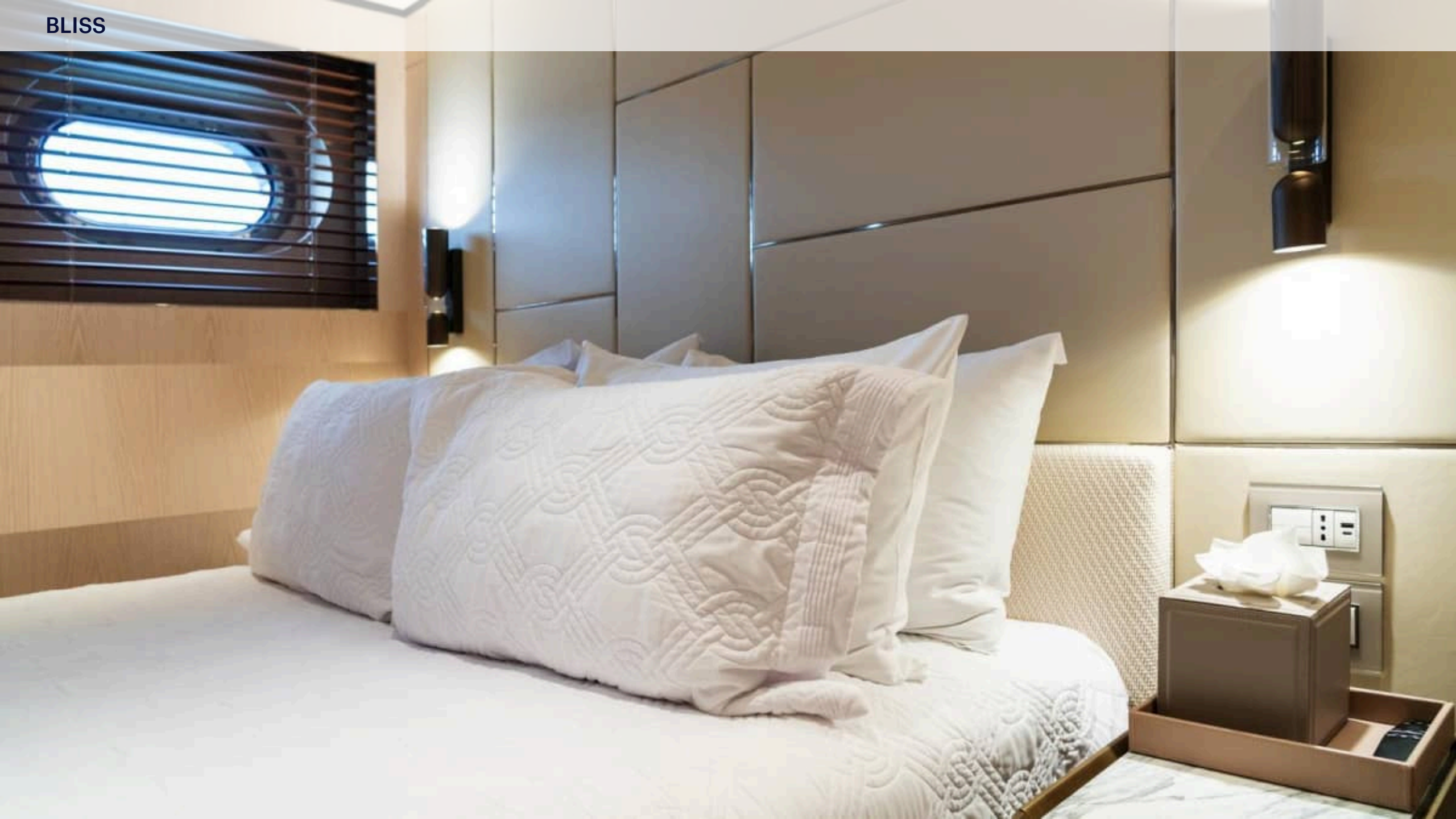
BLISS



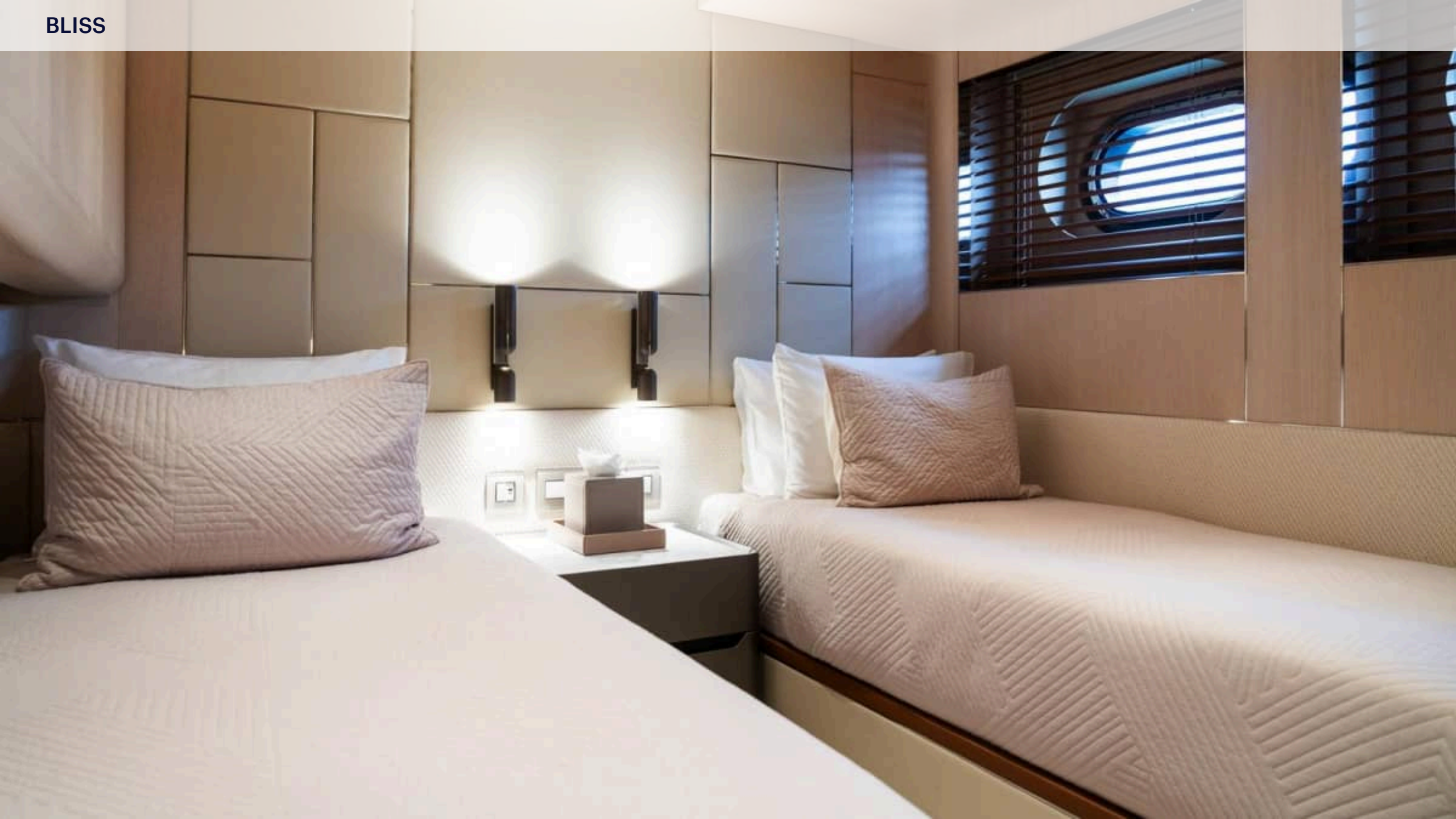
BLISS



BLISS



BLISS



BLISS

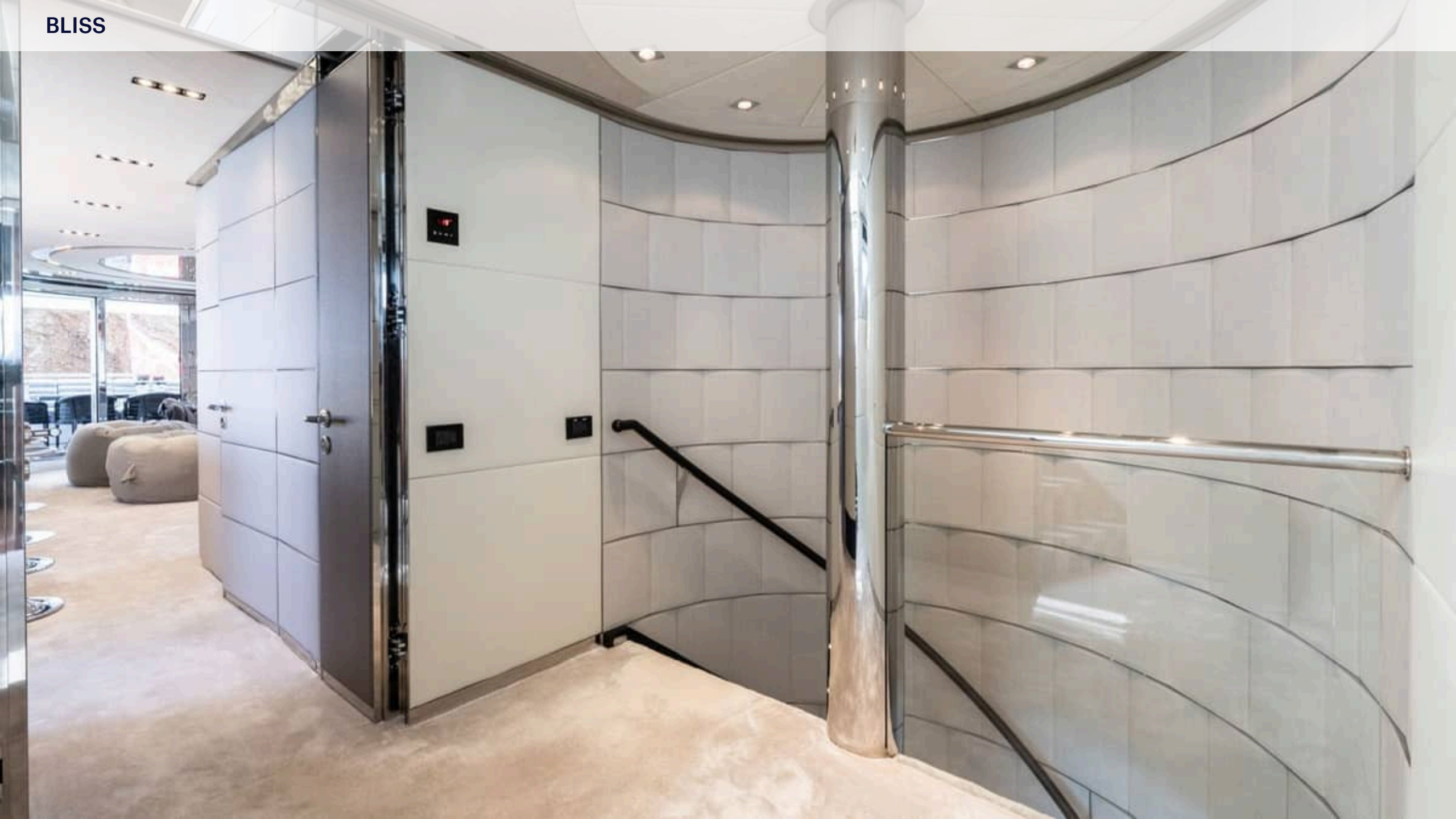


BLISS





BLISS



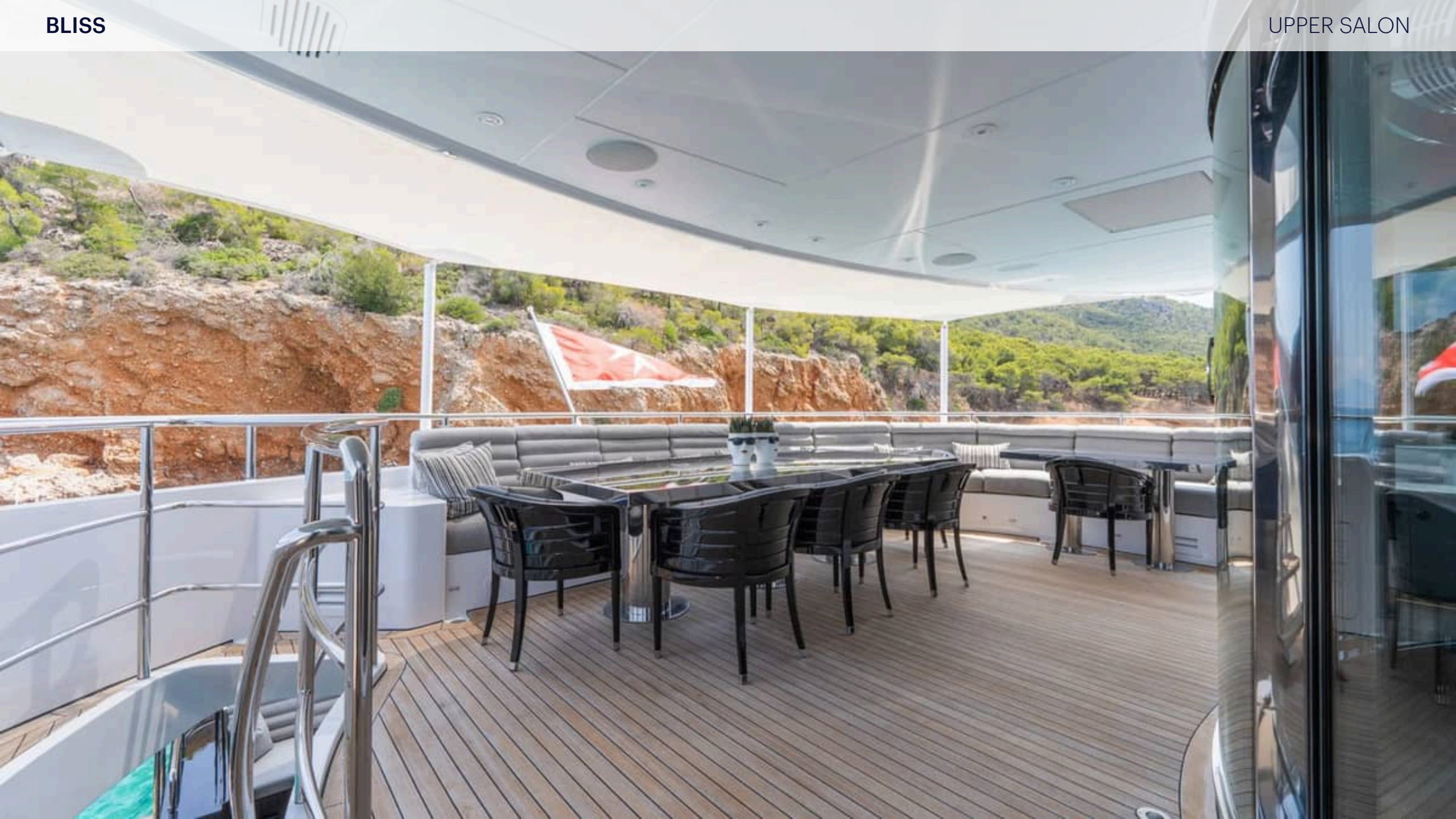


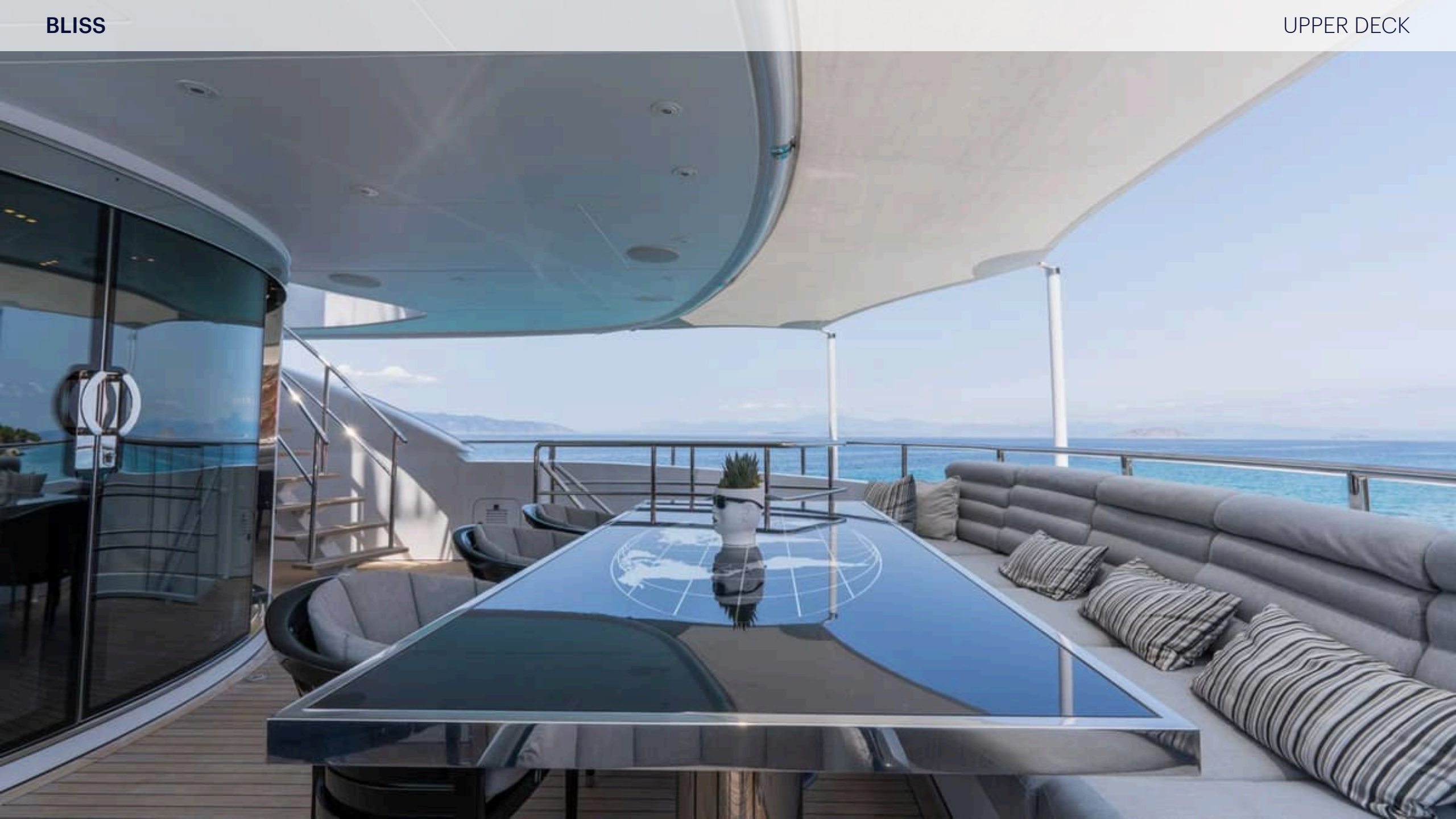




BLISS

UPPER SALON





BLISS

JACUZZI





BLISS



BLISS

SUNDECK



BLISS

SUNDECK

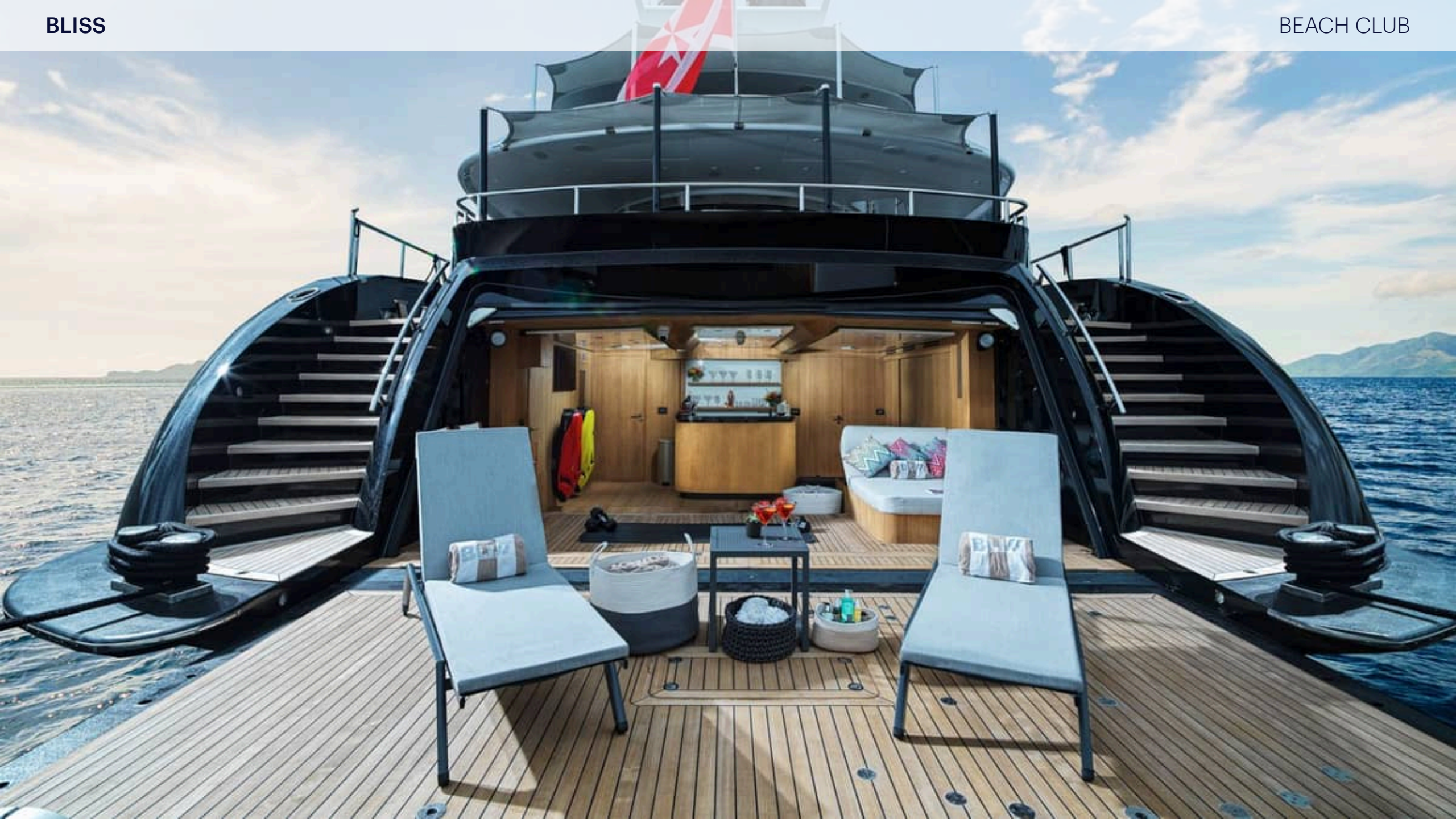






BLISS

BEACH CLUB





BLISS



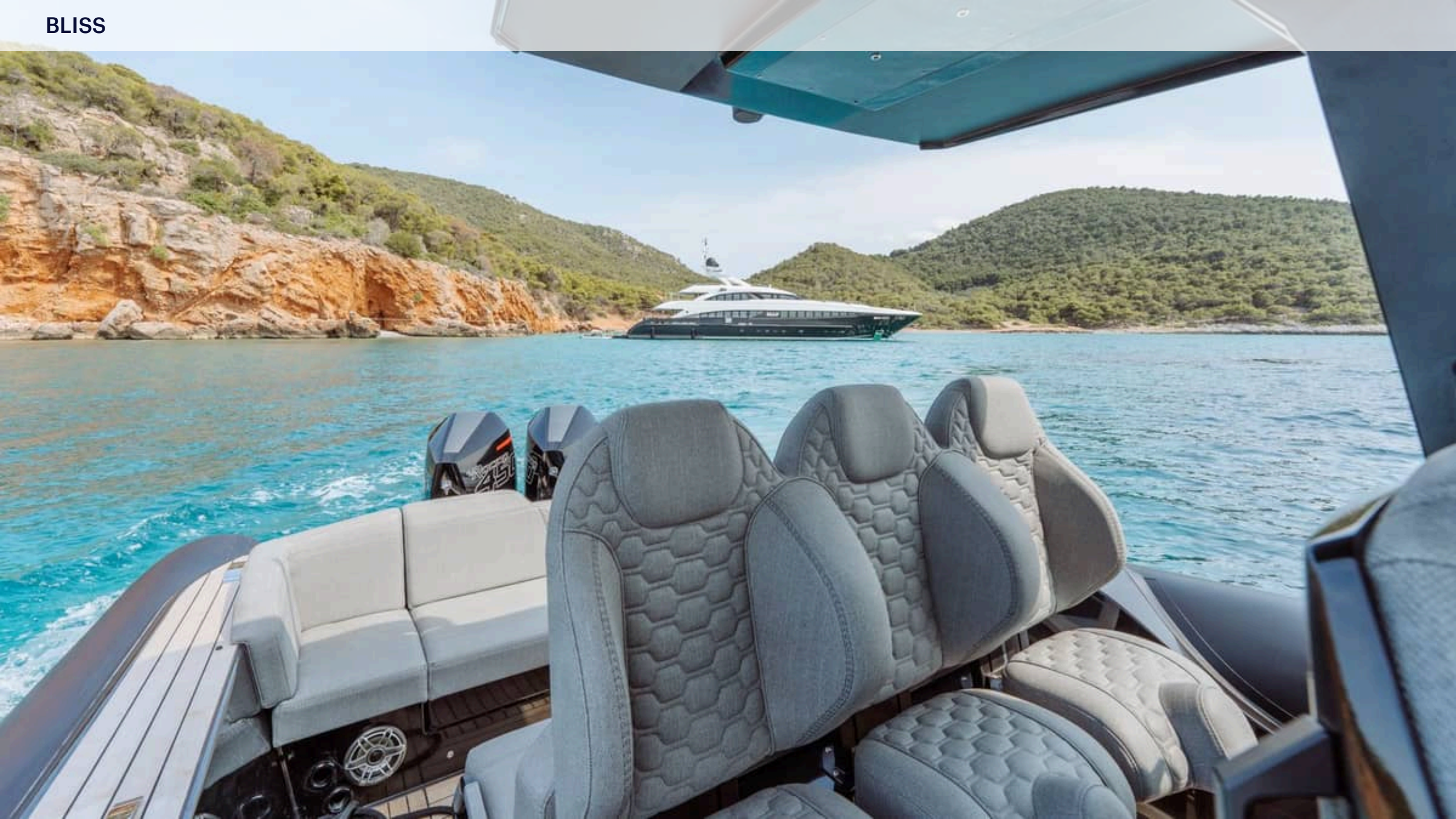
BLISS



BLISS



BLISS



BLISS

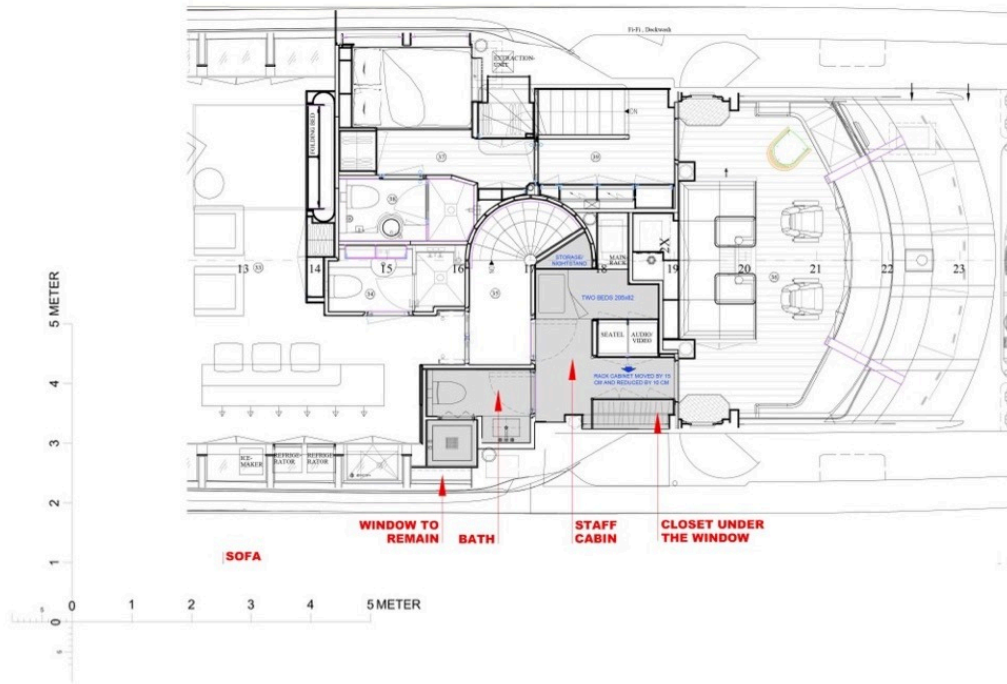


BLISS



BLISS





UPPER DECK



0 1 2 3 METER

UNAUTHORIZED REPRODUCTION OR CONSIGNMENT OF THIS DRAWING TO A THIRD PARTY IS PROHIBITED.
 ALL RIGHTS OF THIS DRAWING AND ITS CONTENTS ENTIRELY AND PARTIALLY ARE PROPERTY OF ARCHITECTURE.
 COPY, TRANSMISSION, DISTRIBUTION, OR ANY OTHER USE OF OR TAKING OF ANY ACTION IN RELIANCE UPON THIS DRAWING IS PROHIBITED.
 IF YOU ARE NOT THE ARCHITECT, PLEASE CONTACT ARCHITECT, VIA E-MAIL AT: 3.10.16@STUDIOAFIADIS.COM. TEL: +3902503004. MOBILE: +3902503004. EMAIL: VIVANDI@STUDIOAFIADIS.COM

1550	A3	01.10.24
R2	16.10.24	

LOWER DECK GUEST AREA
 44 BLISS Lower Deck Plan R1 161024.DWG
44 BLISS

STUDIOAFIADIS
 YACHT DESIGN

