



# ANCALLIA

151' (46M) | FEADSHIP | 1984

# ANCALLIA

---

## BASIC SPECIFICATIONS

<b>BUILDER</b>	<b>FUEL TYPE</b>	<b>GROSS TONNAGE</b>	<b>CRUISING/MAX SPEED</b>	<b>ACCOMMODATION</b>
Feadship	Diesel	428 GT	13 knots / 15 knots	12 guests in 7 cabins
<b>INTERIOR DESIGN</b>	<b>EXTERIOR DESIGN</b>	<b>LENGTH</b>	<b>BEAM</b>	<b>HULL MATERIAL</b>
Colefax & Fowler	De Voogt Naval Architects	151' (46m)	26' 9" (8.13m)	Steel
<b>CREW</b>	<b>FLAG</b>	<b>BUILT/REFIT</b>	<b>DRAFT (F/M)</b>	<b>ENGINES</b>
9	Greek	1984 / 2023	7' 11" (2.41m)	2 x Caterpillar 1400 hp

## KEY FEATURES

- › JACUZZI ON SUNDECK AREA
- › IDEAL YACHT FOR FAMILY CHARTERS
- › OWNER'S SUITE ON MAIN DECK
- › MAJOR REFIT IN 2023
- › WELL-APPOINTED LAYOUT OF SEVEN ELEGANT CABINS

## WATER TOYS

- › 1 X 6.1M MCMULLEN & WING CUSTOM, 4LV250, 250HP DIESEL ENGINE
- › 2 X SEADOO JET SKIS GTR 230
- › 2 X INFLATABLE PADDLE BOARDS
- › 1 X KNEEBOARD
- › 1 X AIRSTREAM 4 TUBE
- › 2 X FISHING ROB
- › 1 X WATERSKIS DOUBLE (KIDS)
- › 3 X SCUBA PRO WETSUITS
- › 1 X 3.1M ZODIAC WITH YAMAHA F20 OUTBOARD
- › 1 X SEABOB F5
- › 1 X WAKEBOARD
- › 2 X KAYAK INFLATABLE
- › 1 X FURY TUBE
- › 1 X WATERSKIS DOUBLE (ADULTS)
- › 1 X WATERSKI (SINGLE SKI)
- › 2 X JACKET FOR DIVING

ANCALLIA





ANCALLIA





ANCALLIA



ANCALLIA





ANCALLIA





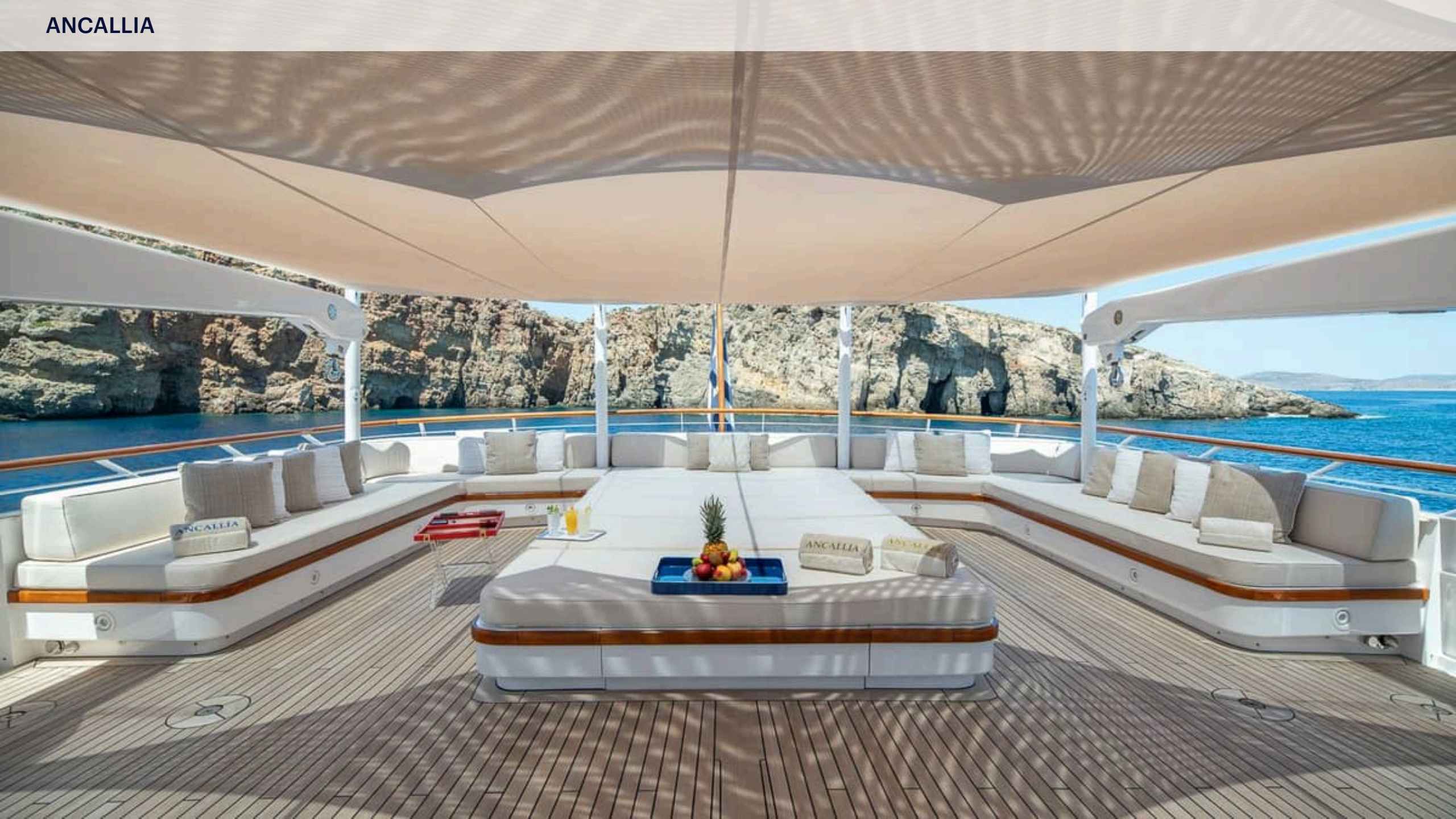
ANCALLIA



ANCALLIA



ANCALLIA



ANCALLIA



ANCALLIA





ANCALLIA





















ANCALLIA

















ANCALLIA



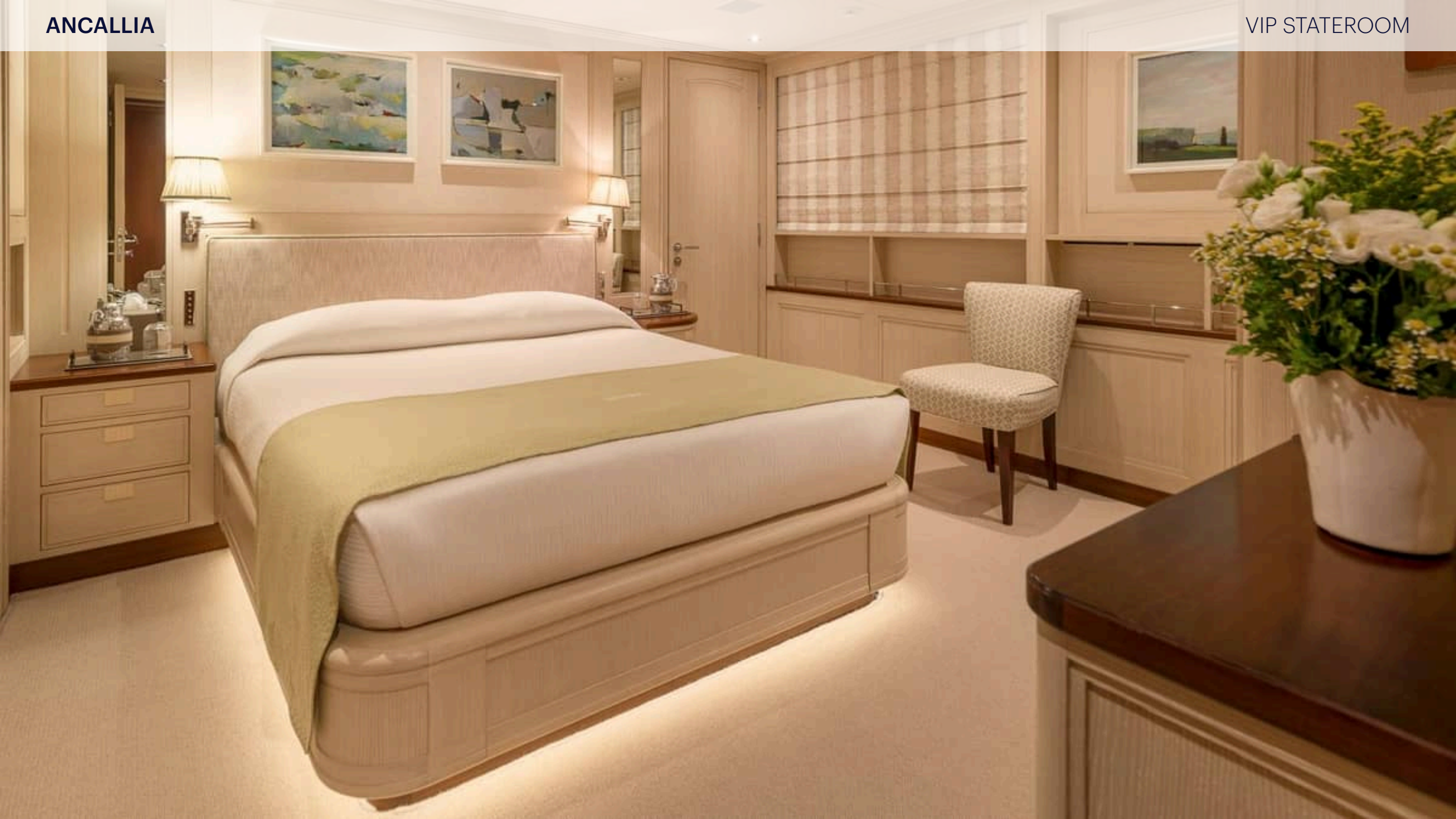
ANCALLIA













ANCALLIA





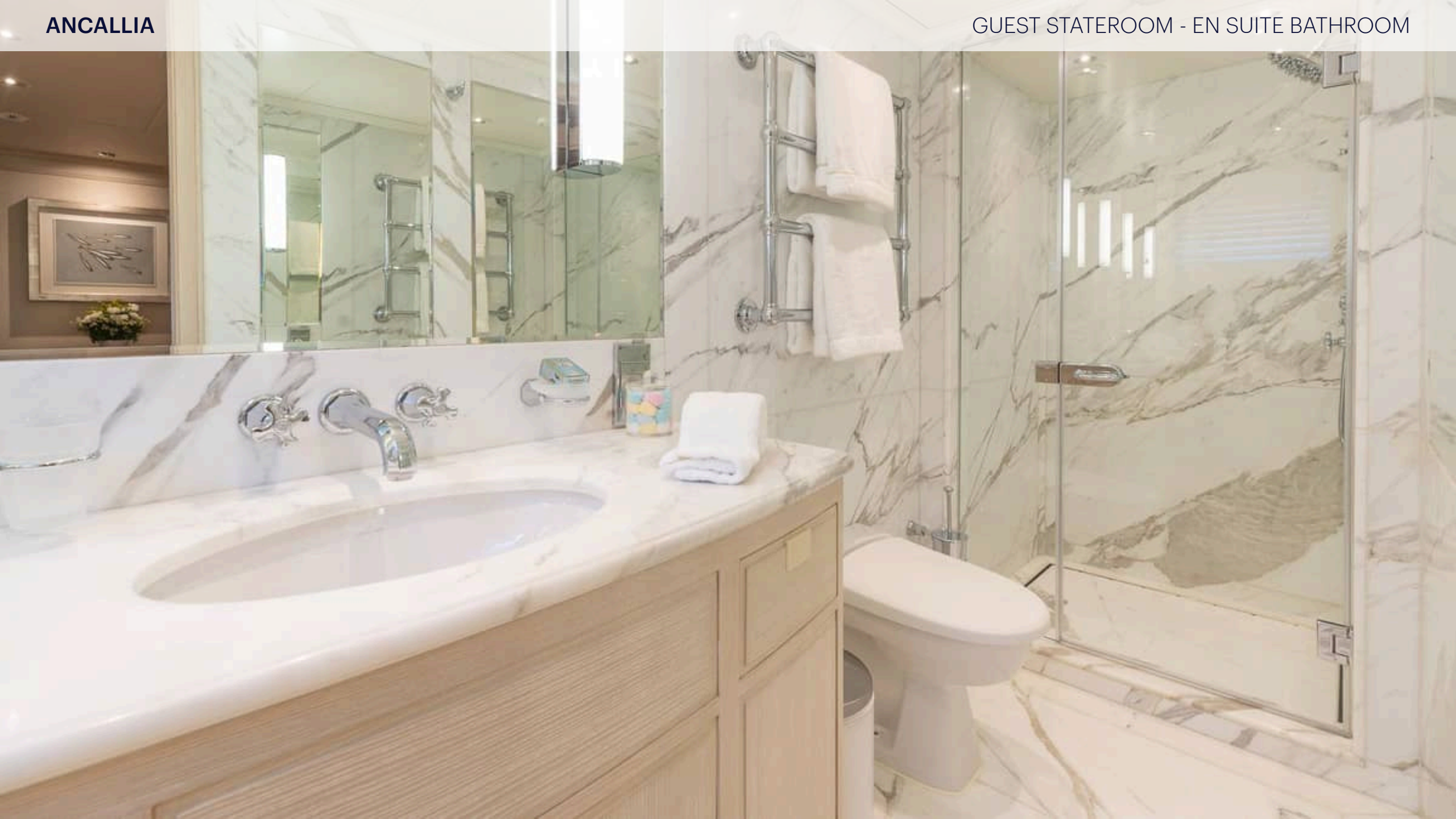
ANCALLIA





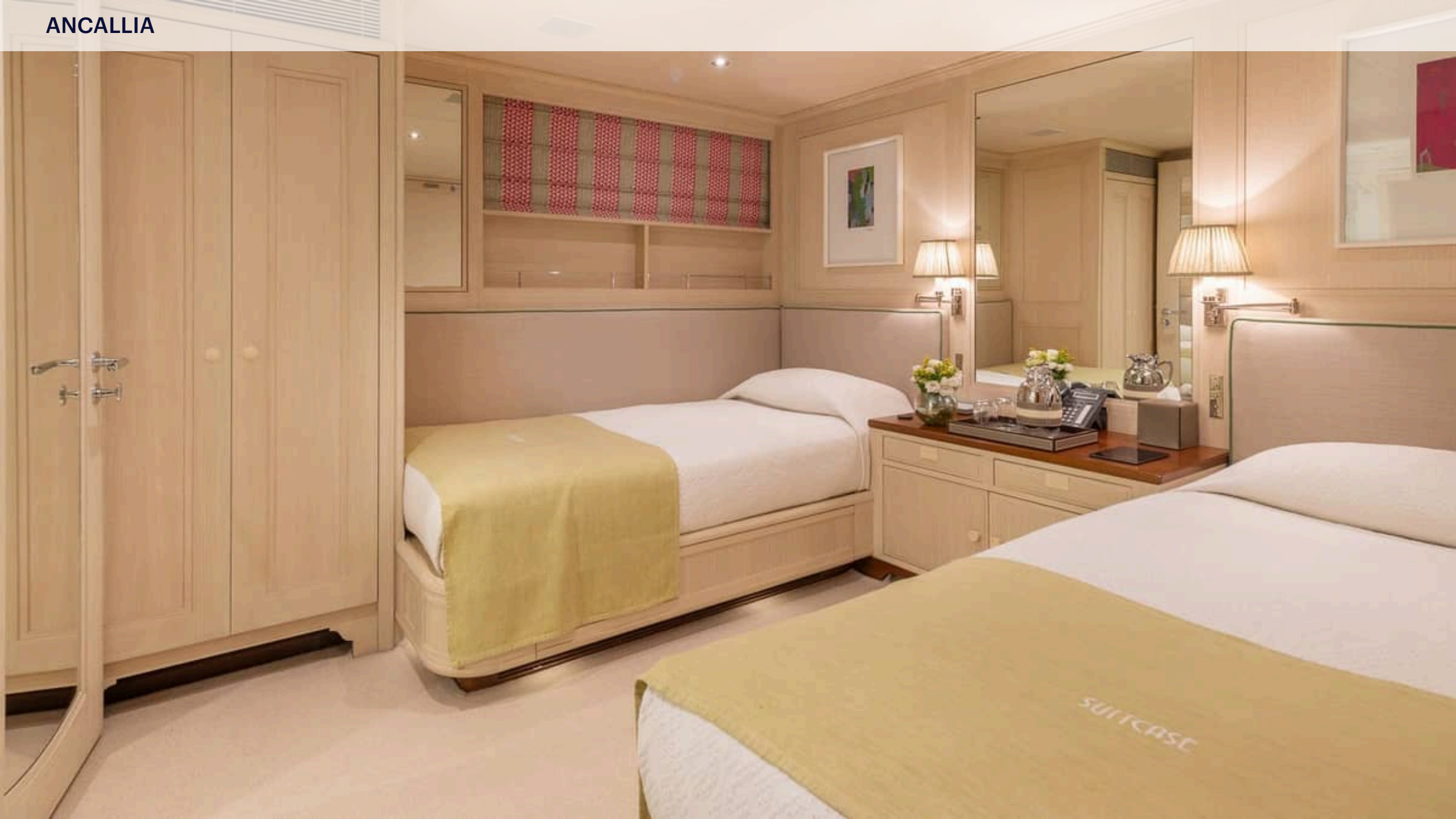






ANCALLIA





SUITCASE



ANCALLIA





ANCALLIA

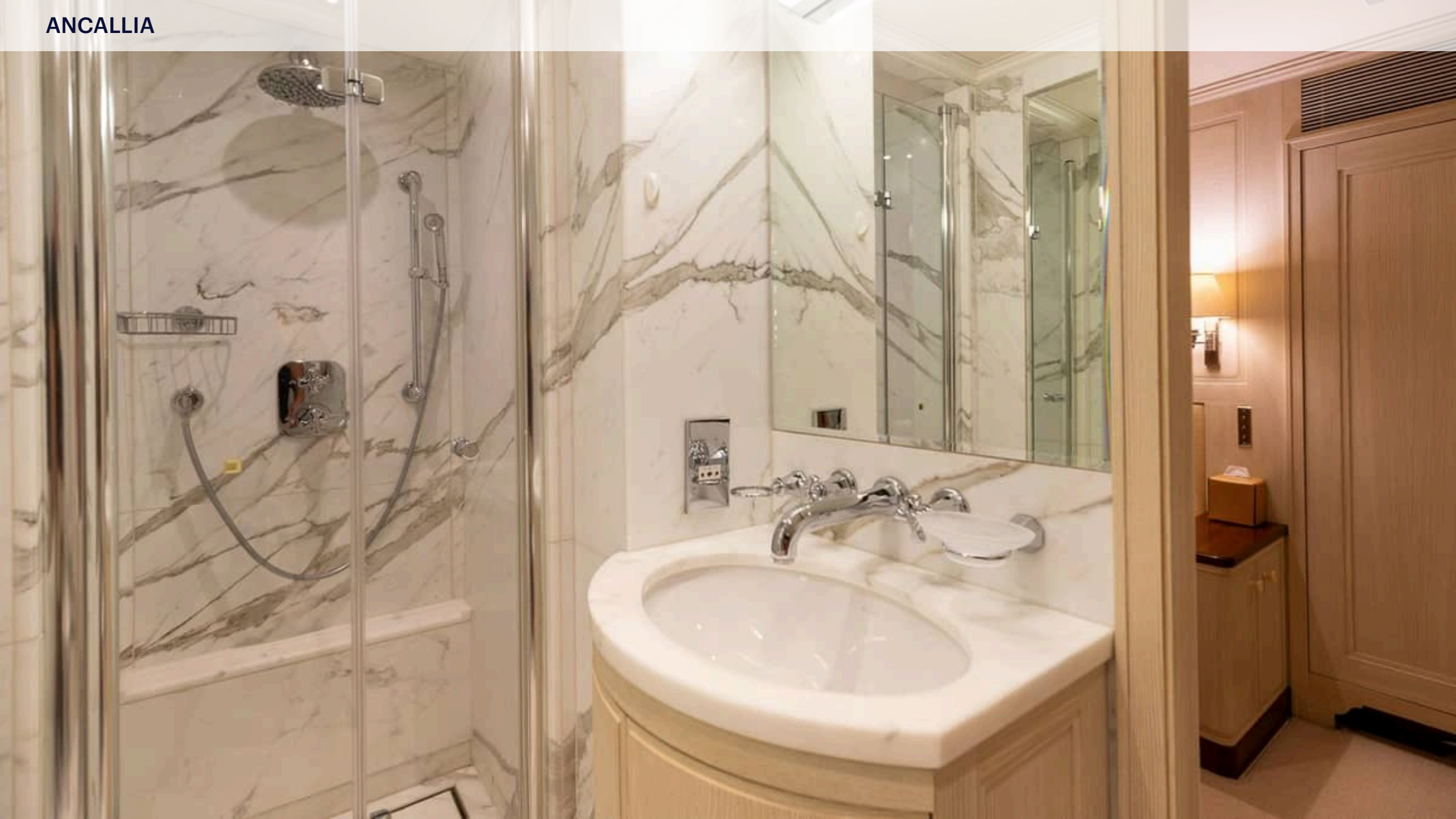


ANCALLIA





ANCALLIA





ANCALLIA



ANCALLIA



ANCALLIA



