



AFRICA I

154' 3" (47M) | BENETTI | 2010



AFRICA I

BASIC SPECIFICATIONS

BUILDER

Benetti

FUEL TYPE

Diesel

GROSS TONNAGE

492 GT

CRUISING/MAX SPEED

16.5 knots / 24 knots

ACCOMMODATION

12 guests in 6 cabins

INTERIOR DESIGN

Francois Zuretti

LENGTH

154' 3" (47m)

BEAM

28' 11" (8.8m)

HULL MATERIAL

Aluminium

CREW

12

FLAG

Maltese

BUILT/REFIT

2010 / 2025

DRAFT (F/M)

9' 3" (2.8m)

ENGINES

2 x MTU M90 16V 4000

KEY FEATURES

- › RIBCO VENOM 44 13,50M (2023) CHASE TENDER
- › FULL-BEAM MASTER CABIN ON MAIN DECK WITH A PRIVATE DECK
- › WHEELCHAIR-FRIENDLY MAIN DECK THROUGHOUT
- › CLEAN LINES, COOL TONES - INTERIORS REFRESHED AND REFINED (2022)
- › CINEMA PROJECTOR IN UPPER SALON
- › OVERSIZED SWIM PLATFORM BUILT FOR ACTION
- › ULTRA-SMOOTH CRUISING WITH ZERO-COMPROMISE STABILIZERS
- › CHARTER ORIENTED CREW OF 12 WITH GREAT REFERENCES AND AN IMPRESSIVE REPEAT CLIENTS RECORD

WATER TOYS

- › RIBCO VENOM 44 13,50M (2023)
- › 2 X SEADOO RXP 300 RS WAVERUNNERS (2018)
- › 1 X RADIN ELECTRIC SURFBOARD
- › 2 X PADDLE BOARDS
- › WAKEBOARD
- › INFLATABLE SOFA
- › INFLATABLE DOCK PARKING STATION FOR THE WATER TOYS AND JET SKIS
- › CASTOLDI 21 BEACH LADDER 6M TENDER (2021)
- › 2 X SEABOB F5S
- › 1 X AWAKE BOARD
- › WATER SKIS
- › WAKESURF
- › INFLATABLE TUBES
- › SNORKELING EQUIPMENT

AFRICA I



AFRICA I



AFRICA I





AFRICA I



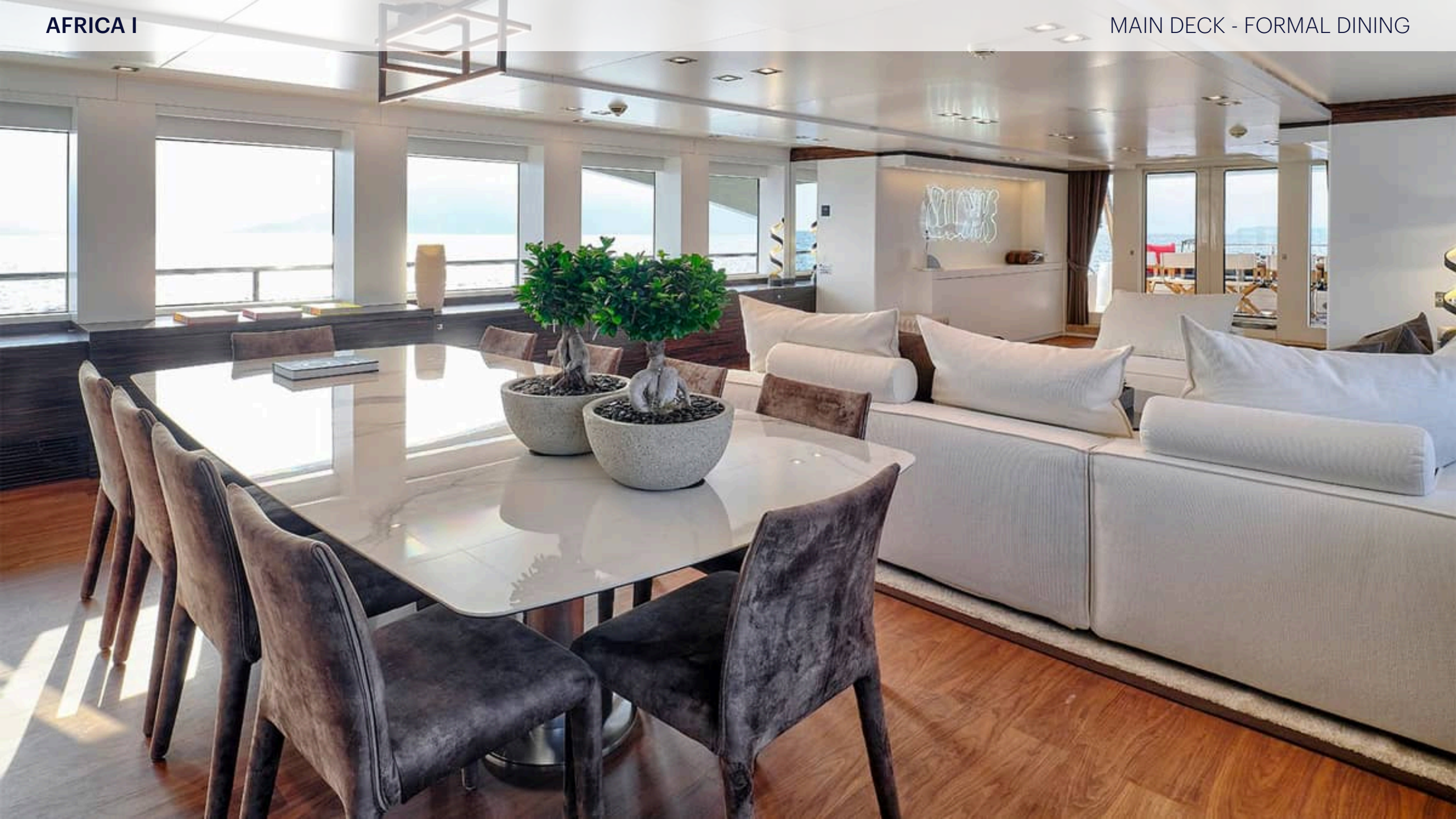


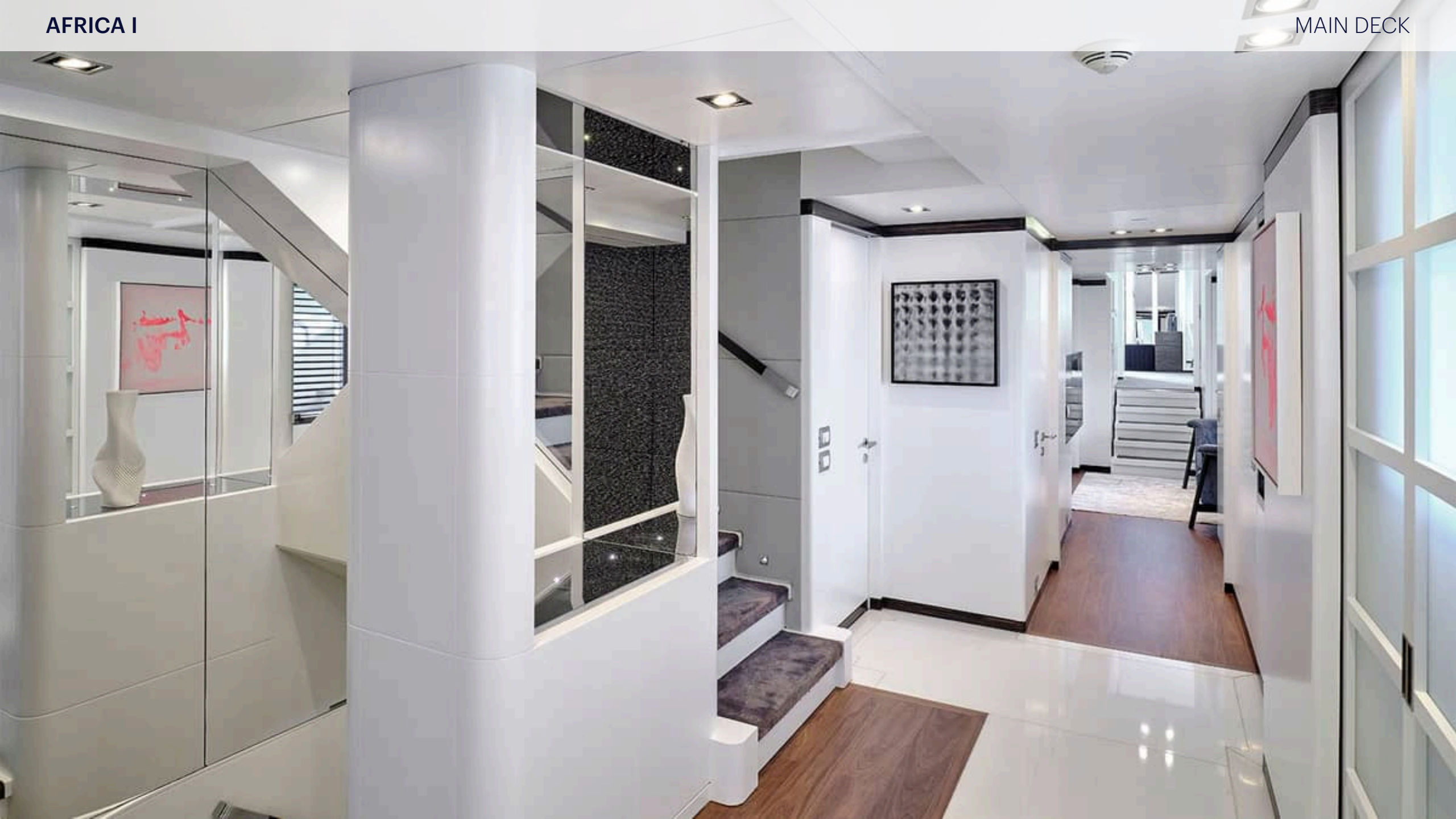


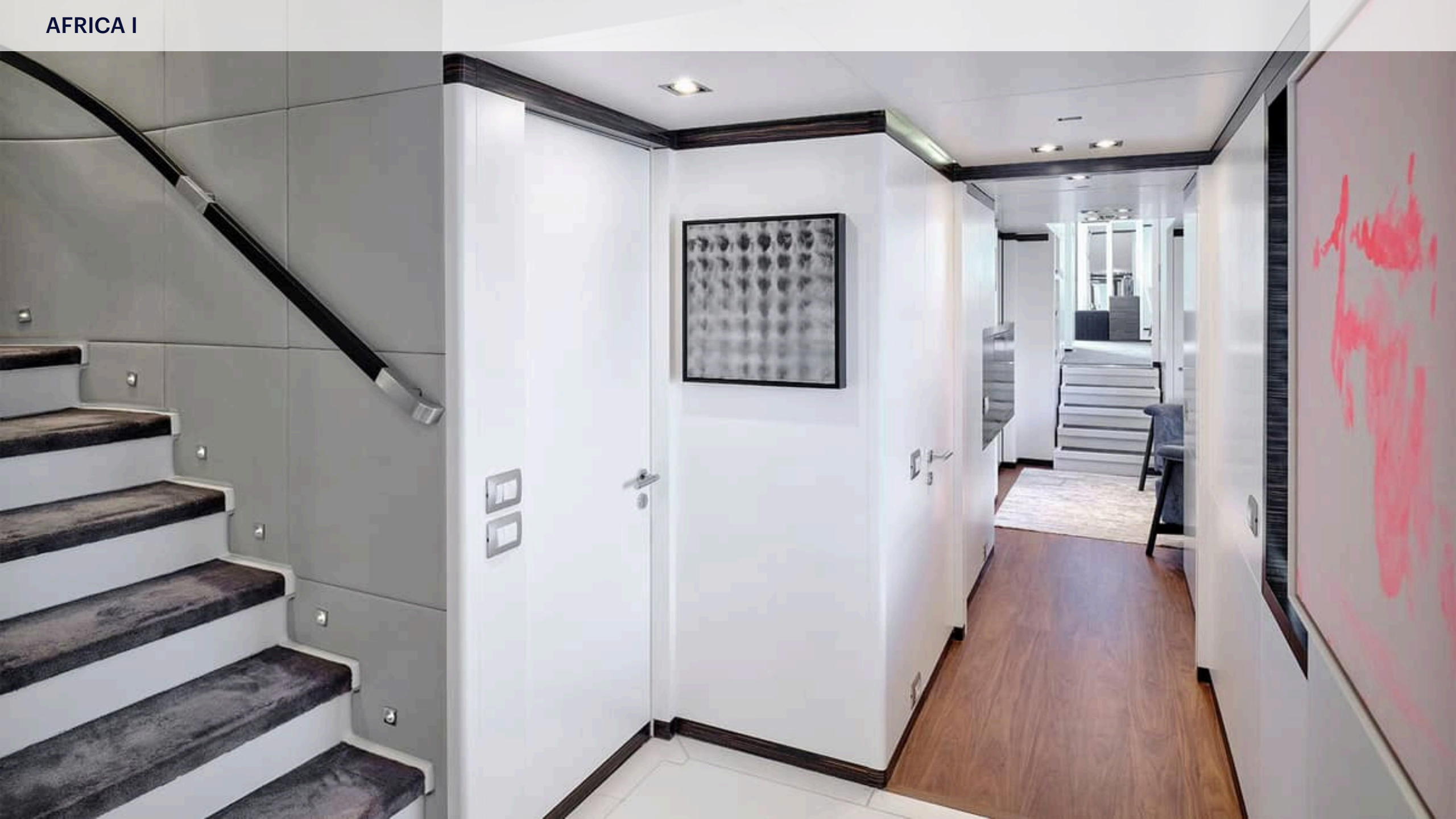


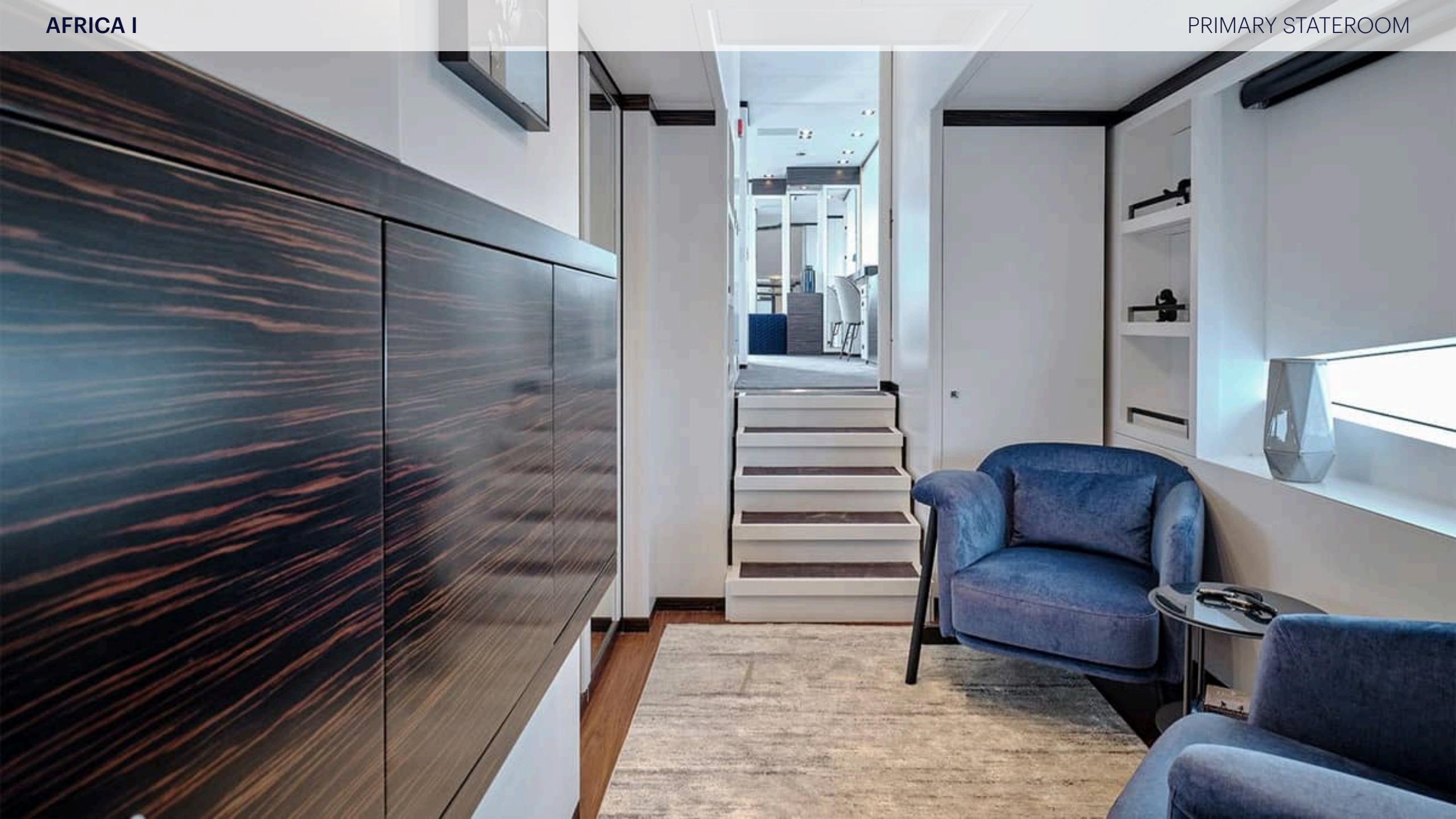






























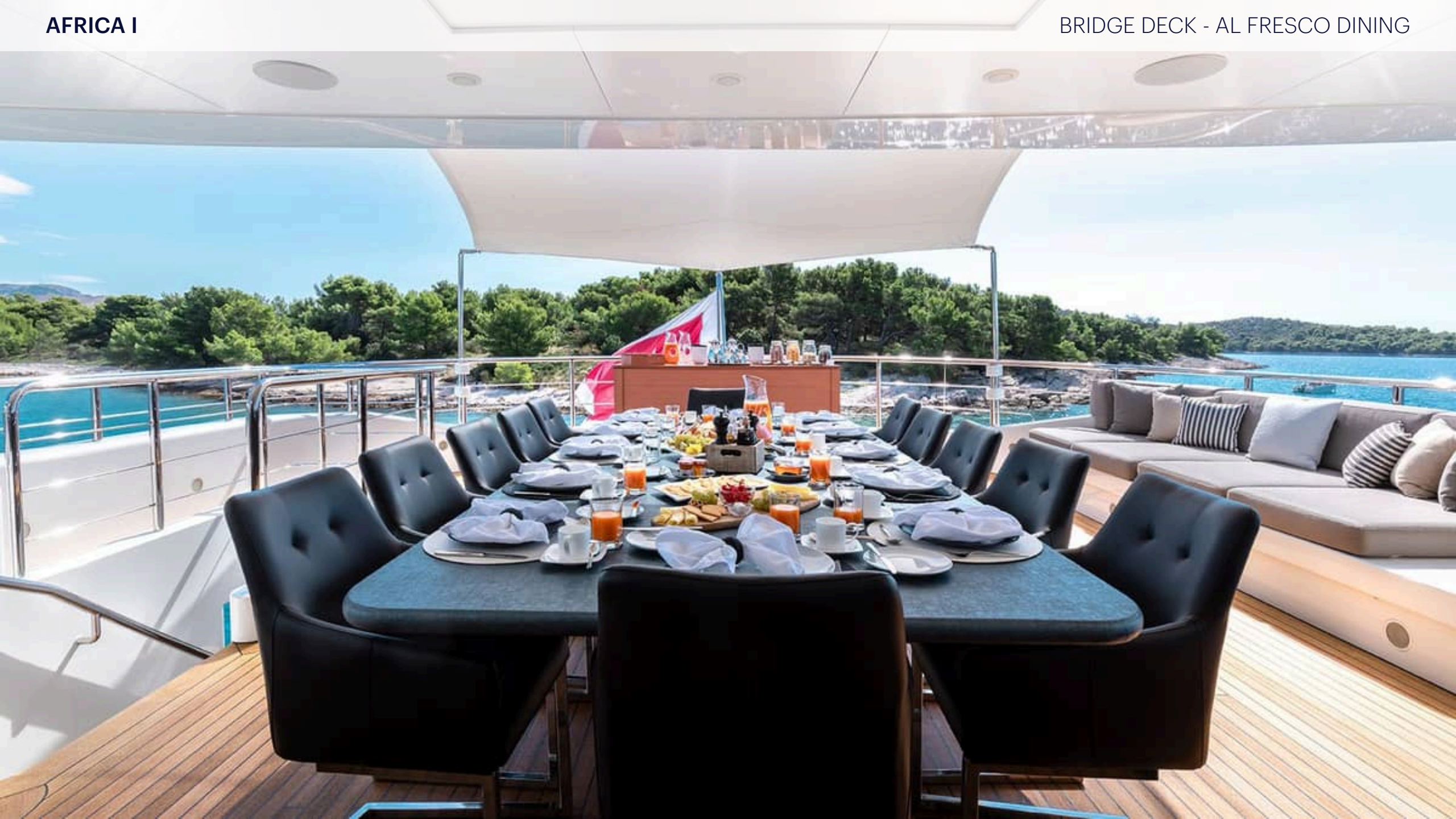


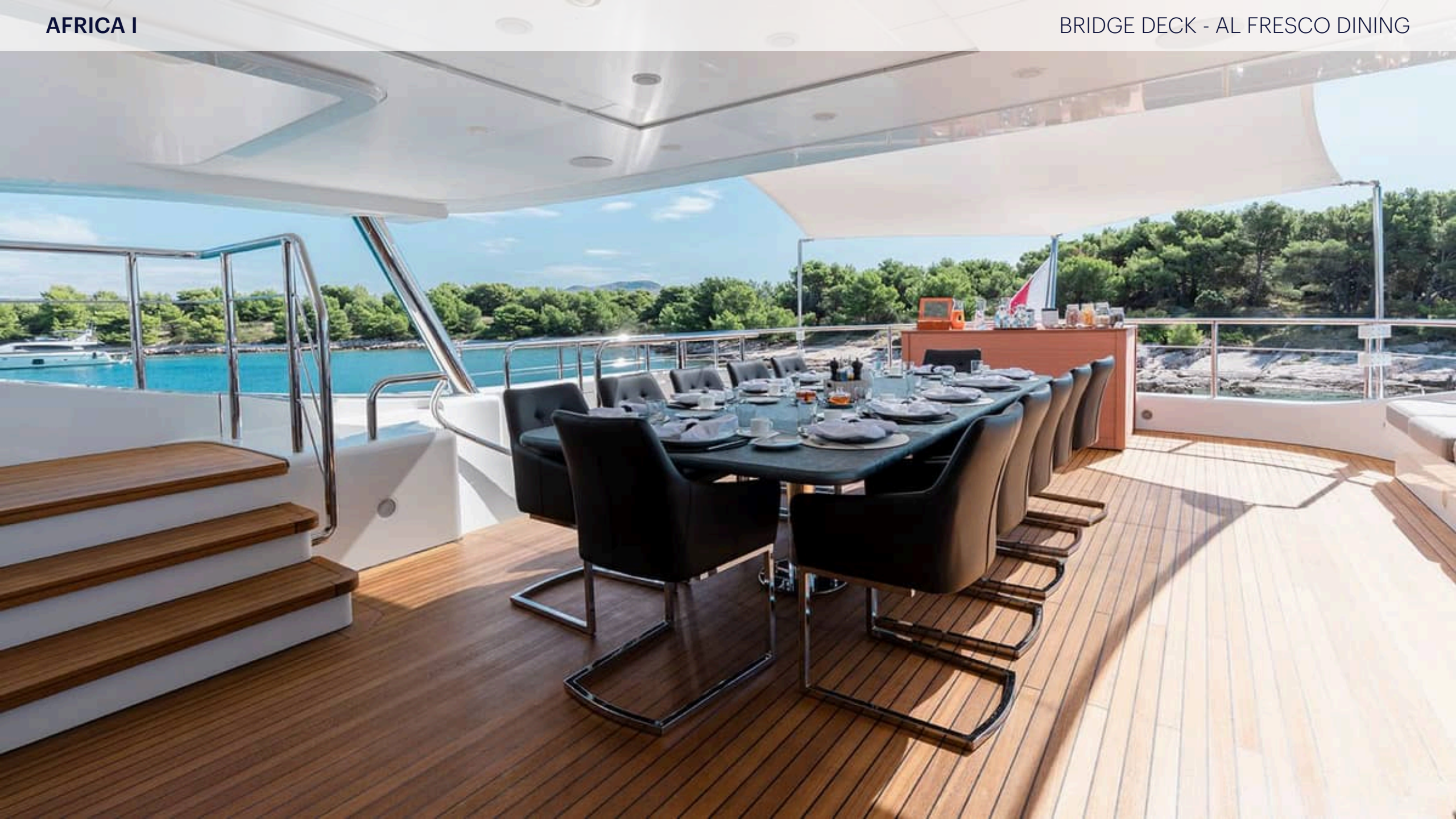


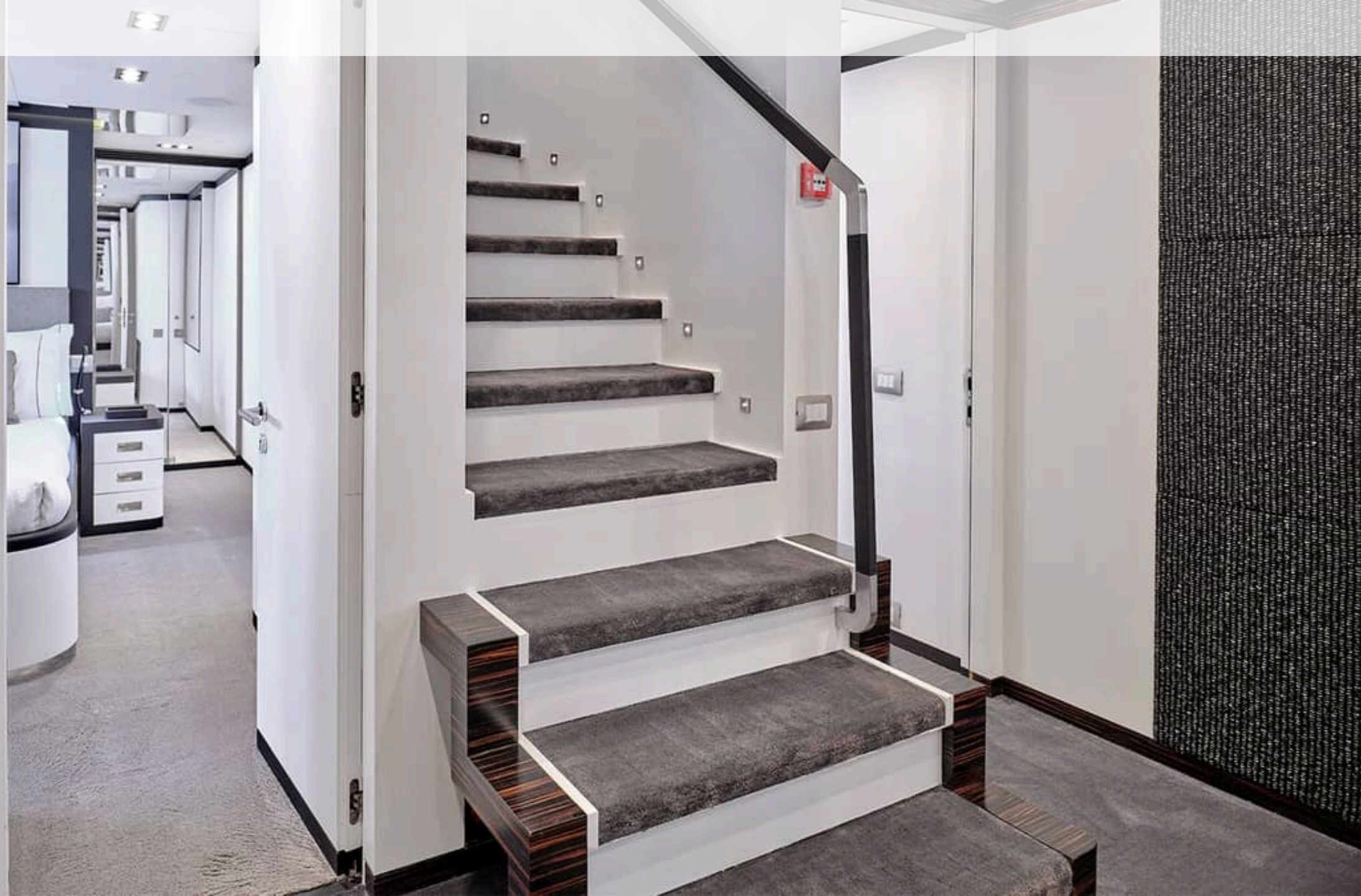


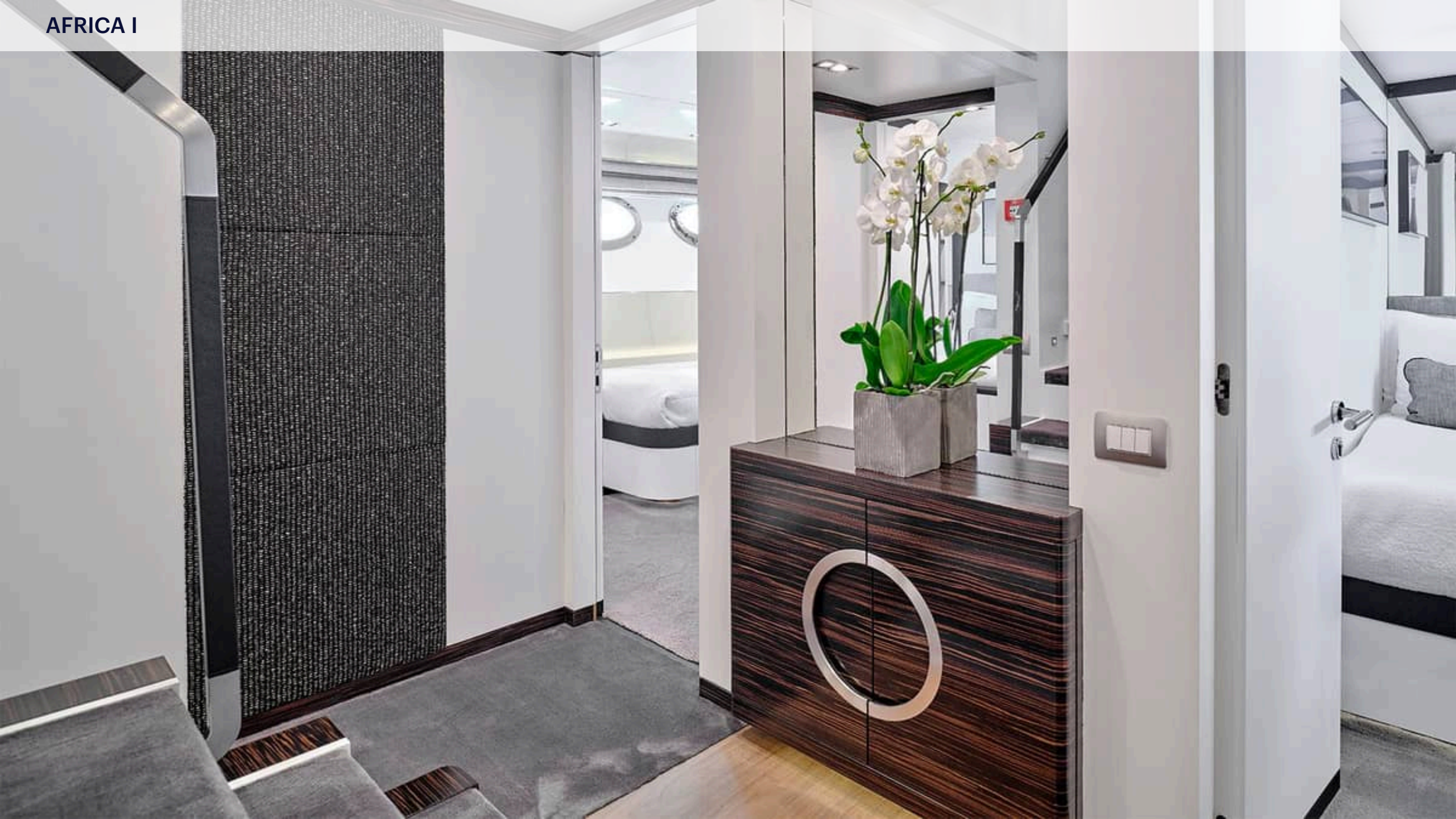


















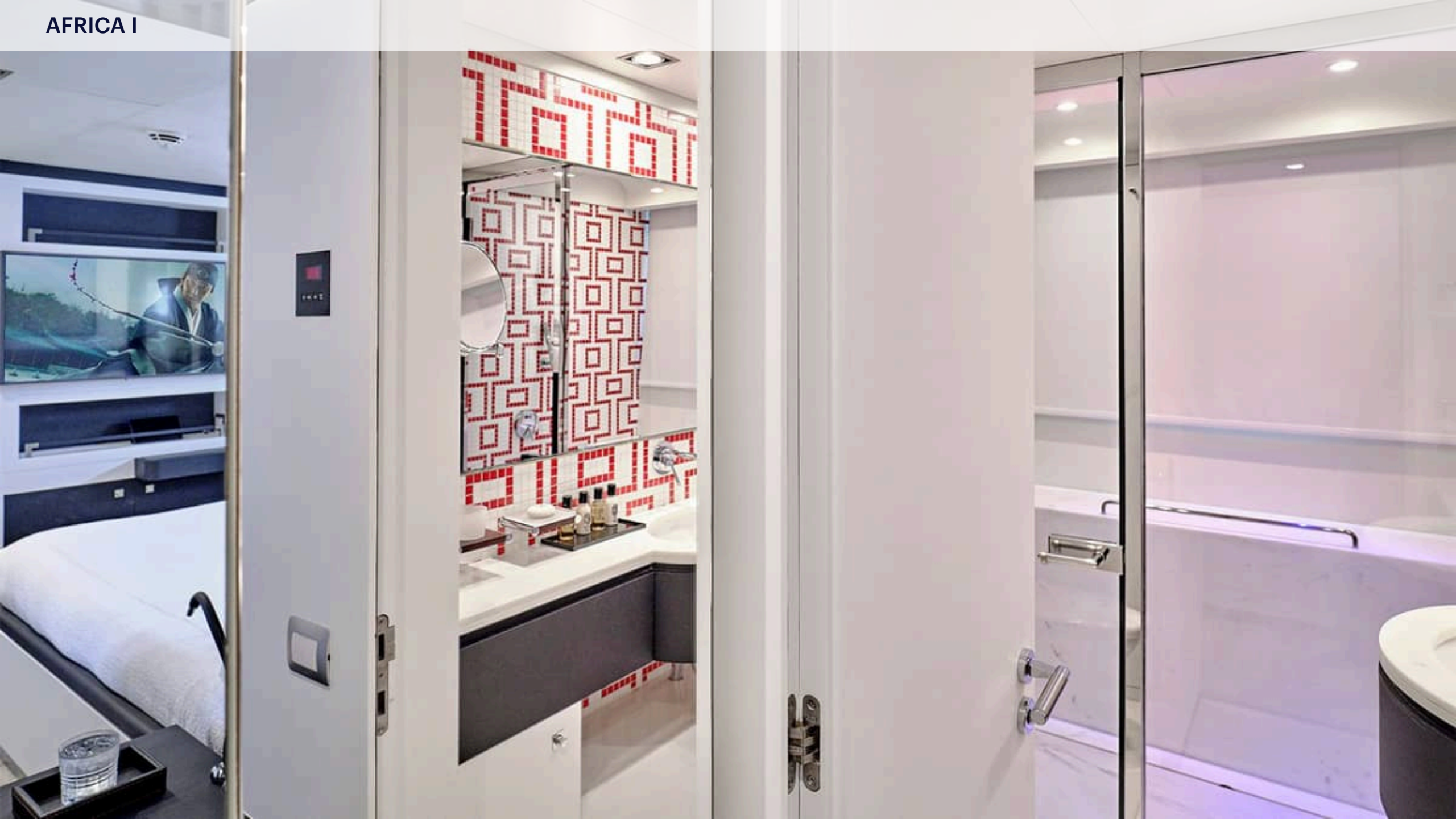




























AFRICA I









AFRICA I





















