



# EUPHORIA 1

**Length:** 27.50 metres (90' 3")

**Beam:** 6.55 metres (21' 6")

**Draft:** 3.1 metres (10' 2")

**Number of Guests:** 9

**Number of Crew:** 4

**Built:** 2001

**Refit:** 2018

**Hull Material:** Wood

**Superstructure:** Flybridge

**Yacht type:** Motor-sailer

Air conditioning, WiFi connection



Aerial



Aft deck



Aft deck



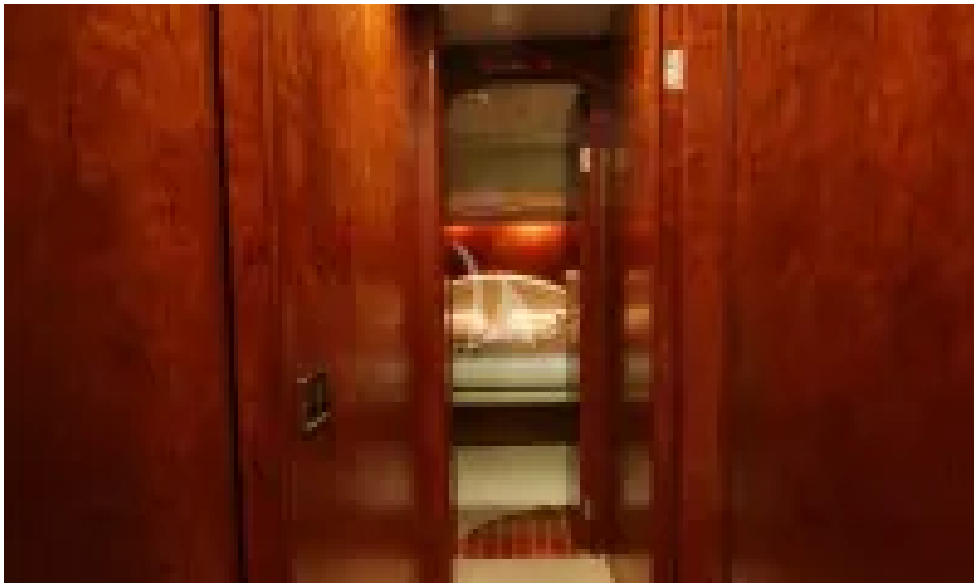
Aft deck



Aft deck



Salon



Interior



Master suite



Mater suite



Mater suite



Mater suite - Bath



Mater suite - Bath



Twin Suite - 1

# SPECIFICATIONS

## ACCOMMODATION

**Number of guests:** 9

**Number of cabins:** 4

**Cabin configuration:** 2 Double Cabins, 2 Twin Cabins

**Bed configuration:** 1 King Beds, 1 Double Beds, 4 Single Beds

## EQUIPMENT

**Engines:** 11Kn -100 lt/hr 8Kn – 60 lt/hr Generator – 5 lt/hr

**Cruising Speed:** 8 knots

**Fuel Consumption:** 100 Litres/Hr (cruising), 60 Litres/Hr (eco)

## WATERSPORTS

**Tender + Toys:** Tender:

Joker 4.2M, Yamaha 50hp

Water Toys:

2x Canoes

2x SUP

Waterski adult & children

Wakeboard

Donuts

Floating mattress

Snorkeling equipment & fishing set

\*More water toys can be available upon request and extra charge

## **Disclaimer**

This document is not contractual. All specifications are given in good faith and offered for informational purposes only. The publisher and company do not warrant or assume any legal liability or responsibility for the accuracy, completeness, or usefulness of any information and/or images displayed. Yacht inventory, specifications and charter prices are subject to change without prior notice. None of the text and/or images used in this brochure may be reproduced without written consent from the publisher.